

# Ecolodge Build Update January 2018 update

We have had the boundaries of the land resurveyed, the white line on the satellite image below marks the edge of the plot.

We are delighted to have new members in our team:

- **Brian Mark**, whose vast knowledge, enthusiasm and experience of using physics to determine the **best options to make the buildings more sustainable** has been invaluable. We have accepted Brian's invitation for Southbank University to monitor what will be novel approaches in Morocco to create comfortable spaces using minimum energy inputs
- **Salima Naji** who has kindly offered to assist when necessary despite her heavy workload; she kindly spent a few hours with a group of us in December during which she demonstrated her wealth of experience and **passion for earth building**, as well as showing us some of her recent and ongoing work in Tiznit
- **Mustapha Khazaz**, an experienced and personable young local **Moroccan architect** who understands green building design and local regulations and is preparing the final plans to submit to the authorities soon



View of walls & High Atlas from the plot



**The layout** has been changed substantially as a result of:

- **fire regulations:** the need to give wide access for fire engines along the east side on the plot. This has turned out to be a

bonus because it gives us vehicular access for dropping off people and suitcases close to the bedrooms and it allows the grey water system and services to be neatly inserted under gravel

- the need to have **bedrooms face true south** to better benefit from **passive solar gain** and to allow the **most effective shading** to keep temperatures comfortable in the rooms in the summer

Work party – Brian, Diana & Russell with Jane & Said

We have used a **classical Moroccan style**; we have placed the elongate pool more centrally so that, as you enter, you see it through an archway and it draws the eye towards a series of three further arches with a fountain at the end.



We have placed the **areas where the staff work closer to the communal spaces** because we

have recognised that we need to perpetuate the **family atmosphere** they create so it's important that you see as much as possible of them; guests and the staff so love it when the staff join in singing and dancing, and the staff love to hear the music while they work too. We don't want to be an establishment where many of the staff are hidden.

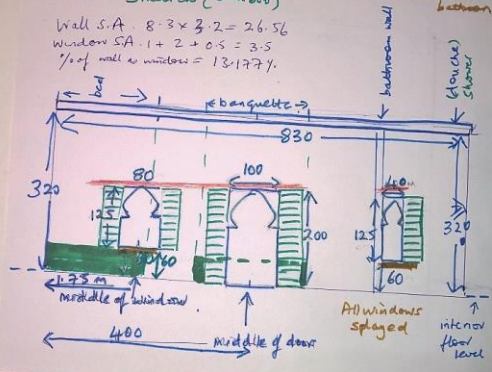
While surveying the plot we were delighted to find that as well as an **old carob tree and some dwarf palms, we have 2 argan trees** eaten to the ground by passing animals. We can't wait to use our recycled grey water to bring them back to life!

To return to earlier history of the project see [this page](#) . Below is my sketch of the south-facing facade of bedrooms complete with shading shutters; there will also be splayed reveals on the windows to allow greater light penetration.

FRONT ELEVATION OF BEDROOMS + EN SUITE BATHROOMS

- Bamboo awning
- Window seat (40cm deep, 60 cms from floor) 180cm wide bedroom, 60cm wide bathroom
- Shutters (bamboo)

Wall S.A.  $8 \cdot 3 \times 3 \cdot 2 = 26.56$   
 Window S.A.  $1 + 2 + 0.5 = 3.5$   
 % of wall as windows = 13.177%



All windows splayed